



**Notting Hill & Ealing
High School GDST**

Appointment of

Teacher of Geography

For September 2017



About the School

Notting Hill & Ealing High School is one of London's leading independent girls' day schools. Founded in 1873 it is the oldest of the 26 schools which make up the Girls' Day School Trust having begun life in Notting Hill and moved to Ealing in 1930. The school is a friendly and welcoming community of just over 900 girls, together with approximately 220 teaching and support staff. We occupy a site in suburban, leafy, west Ealing with excellent transport links. (We are an easy walk or bus ride from Ealing Broadway or West Ealing stations: District and Central underground lines, mainline trains and Crossrail from 2018.) The school is oversubscribed and a very popular choice at all ages with girls joining us from most parts of West London as well as areas further afield.

NHEHS is an academically selective school. Our girls are bright, enthusiastic and eager to learn and teaching here is a great experience. In our latest ISI inspection we achieved the highest possible grades across the board and the inspectors noted that 'the quality of the pupils' achievements and learning is exceptional.' Public examination results are consistently outstanding and girls go on to study a wide range of subjects at prestigious universities. (Latest results and the university destinations of Leavers can be found on our web site). Our facilities and teaching and learning resources are excellent and the GDST has an ongoing strategy of development and investment in all its schools. .

We are an all through school (ages 4-18). Around 300 girls attend the Junior School with 600 in the Senior School of whom 150 are in the Sixth Form.) The Junior and Senior Schools occupy their own parts of the site and in day-to-day terms operate independently. There are strong links between staff in both Junior and Senior departments with some notable examples of integrated teaching particularly in music and sport.

You will find Notting Hill & Ealing girls to be well grounded, confident and independent. They are proud of their school and value kindness and laughter, fun and friendship. The school is highly regarded for the way it achieves its outstanding results within a particularly warm and supportive environment. We put pastoral care and achieving the best for every girl at the heart of everything we do here and there is a deep-seated ethos of respect, tolerance and understanding.



"We are delighted that you are considering NHEHS and hope that you will want to apply for this post once you have found out a little more about us. Our website, www.nhehs.gdst.net will tell you more about the school and give you a taste of the atmosphere here."

Matthew Shoults, Headmaster

Teacher of Geography

The Post

The post is available from September 2017.

The vacancy provides the opportunity for a well-qualified, inspirational graduate to teach throughout the school to A-level and to contribute to a flourishing department in both its curricular and extra-curricular activities.

Person Specification

We are looking for a well-qualified candidate with excellent subject knowledge and a passion for the subject. She/he will have excellent organisational and time management skills and the ability to produce creative solutions to challenges. She/he will be a good communicator who can enthuse and inspire pupils and will have exciting ideas about the teaching of geography and ways in which girls can be inspired both within and outside the curriculum. The ideal candidate will be fully committed to the vibrant extra-curricular life of the school.

The Department

The Geography Department consists of three full time teachers. The Department develops enthusiasm for the subject using a wide variety of teaching and learning techniques. We encourage an enquiry-based approach to studying Geography, helping students to develop a sense of place and a wide range of skills. Within a supportive environment we encourage all students to achieve their full potential. In all years, we have a balance between Physical, Human and Environmental Geography. Fieldwork plays an essential role in the understanding of the subject, and all year-groups enjoy fieldwork visits to complement the curriculum.

The subject is taught largely in two specialist-teaching rooms, within a Humanities area of the school. All rooms are well equipped and the department is generously resourced. There are laptops for pupil use and the use of ICT is well established. The school has its own fully automatic GPRS weather station.

Extra-curricular provision

The Department runs a Geography Club for the Lower School, which is supported by Sixth Formers. In recent years, the Department has entered a Year 10 team in the local round of the GA 'World Wise' quiz. We offer a range of opportunities to attend evening lectures advertised through the Geographical Association or RGS, which are well attended by the Year 12 and 13 students. The Department has run very successful trips to Iceland for Year 10 students and above over the last couple of years.

The Curriculum

Years 7, 8 and 9 (Key Stage 3)

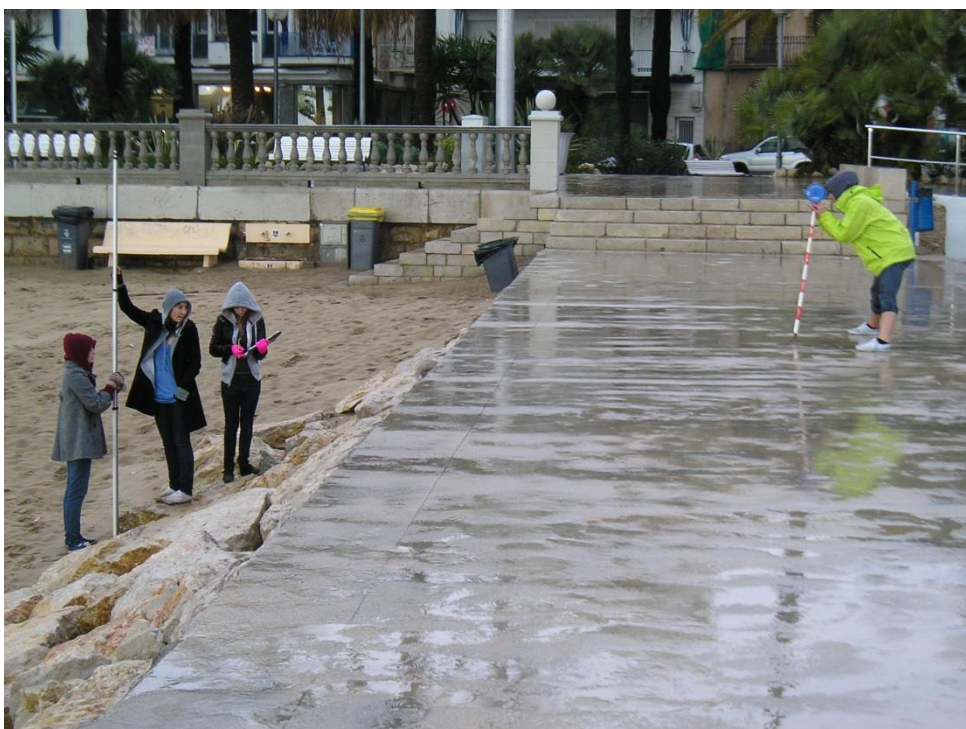
At Key Stage 3, all students are taught in their tutor groups. In Year 7, students develop essential geographical skills through topics including exploring Britain, mapping and GIS, population, migration and sustainability. In Year 8, climate and weather, geography of health, cold environments, conflict over resources and flooding are explored. Year 9 students tackle more global issues such as superpowers, development, tropical rainforests, climatic hazards and climate change. Each year group undertakes a field visit linked to one of the topics being studied. In the past, these have included a trip to Cadbury World and some fieldwork in the Chilterns.

Years 10 and 11 (Key Stage 4)

At Key Stage 4 the students follow the Cambridge IGCSE. There are 3 themes studied which include Population and Settlement, The Natural Environment and Economic Development. In Units 1 and 2 there is core knowledge and understanding of Physical and Human Geography. Assessment is by examination only, and students sit three papers. Paper 1 examines the core knowledge and understanding of all three themes. Paper 2 is a skills paper that synoptically examines all three themes. Paper 4 is the alternative to fieldwork. There is a three-day field visit, currently to Margham, South Wales, which prepares students for the Paper 4 examination.

A Level

At Key Stage 5 the students follow the Edexcel course, comprising four units. In Year 12, students are taught Tectonic Processes and Hazards and Coastal Landscapes and Change as well as Globalisation and Regenerating Places. There is a four-day residential trip, currently to Slapton, Devon to prepare the students for the Independent Investigation element of the course. The investigation requires the girls to produce a written report of 3-4,000 words based on any aspect of the specification. In Year 13, students are taught the Water Cycle and Water Insecurity, The Carbon Cycle and Energy Security as well as Superpowers and Global Development and Connections. In addition to the Independent Investigation, there are three written examinations, including a synoptic paper based on a pre-released resource booklet, all of which are taken at the end of Year 13.



Terms and Conditions of the Post

Salary is according to qualifications and experience.

Benefits include:

Staff Fee Remission – staff are eligible for fee remission, currently 50% of the basic school fee for a full-time employee subject upon their daughter(s) meeting the academic conditions for entry; part-time staff are eligible to a reduction on a pro-rata basis

Membership of Teaching Staff Pension Scheme

Season Ticket Loans - Interest free loans are available to staff to enable them to buy annual season tickets.

Computer Loans - Interest free loans are available to staff to enable them to buy a computer for personal use at home.

Cyclescheme – the School is part of the scheme, which enables staff to purchase bicycles and equipment at a tax advantageous rate and pay for the equipment over 12 months.

Lunches – free lunches are provided to all staff during term time.

Application and Interview Process

Applications should be submitted by **midday, on 15th May 2017** at the latest; however applications may be considered in advance of the deadline. Candidates should complete the application form provided and also include a covering letter and full curriculum vitae with details of qualifications and experience and the names, addresses, telephone numbers and email addresses of two professional referees, one of whom should be the Head of their present or most recent school.

Completed applications should be sent to:

Mr Matthew Shoults
Headmaster
Notting Hill & Ealing High School
2 Cleveland Road, London W13 8AX

or may be emailed to: recruitment@nhehs.gdst.net

Shortlisted candidates will be invited for interview. As part of this process, they will be expected to teach a lesson of up to 35 minutes for which a full prior briefing will be given. All applications will be acknowledged and candidates who have not heard from us further within two weeks of the closing date should assume that the post has been filled.

All adults employed at the school are cleared for working with children and young people through the Disclosure & Barring Service. Please see attached full information regarding the Girls' Day School Trust guidelines on the Safeguarding of Children.

Further information about the school can be found on our website at: www.nhehs.gdst.net

[Application Form](#)